



# **NVIDIA Control Panel**

## ***Quick Start Guide***

**Driver Release 90 for Windows**  
**NVIDIA Corporation**  
**September 2006**

---

Published by  
NVIDIA Corporation  
2701 San Tomas Expressway  
Santa Clara, CA 95050

Copyright © 2006 NVIDIA Corporation. All rights reserved.

This software may not, in whole or in part, be copied through any means, mechanical, electromechanical, or otherwise, without the express permission of NVIDIA Corporation.

Information furnished is believed to be accurate and reliable. However, NVIDIA assumes no responsibility for the consequences of use of such information nor for any infringement of patents or other rights of third parties, which may result from its use. No License is granted by implication or otherwise under any patent or patent rights of NVIDIA Corporation.

Specifications mentioned in the software are subject to change without notice.

NVIDIA Corporation products are not authorized for use as critical components in life support devices or systems without express written approval of NVIDIA Corporation.

NVIDIA, the NVIDIA logo, Detonator, Digital Vibrance Control, ForceWare, GeForce, nForce, nView, NVKeystone, NVRotate, Personal Cinema, PowerMizer, Quadro, RIVA, TNT, TNT2, TwinView, and Vanta are registered trademarks or trademarks of NVIDIA Corporation in the United States and/or other countries.

International Color Consortium and the ICC logo are registered trademarks of the International Color Consortium. Intel and Pentium are registered trademarks of Intel. DirectX, Microsoft, Microsoft Internet Explorer logo, Outlook, PowerPoint, Windows, Windows logo, Windows NT, and/or other Microsoft products referenced in this guide are either registered trademarks or trademarks of Microsoft Corporation in the U.S. and/or other countries. OpenGL is a registered trademark of Silicon Graphics Inc. Other company and product names may be trademarks or registered trademarks of the respective owners with which they are associated.



**NVIDIA.**

**NVIDIA Corporation**

2701 San Tomas Expressway

Santa Clara, CA 95050

[www.nvidia.com](http://www.nvidia.com)



# Table of Contents



## 1. Introduction

About the NVIDIA Control Panel . . . . .	2
Getting Support and Information . . . . .	3

## 2. System Requirements and Driver Installation

Hardware and Software Support . . . . .	6
Installing Your NVIDIA ForceWare Graphics Driver . . . . .	11

## 3. Understanding the NVIDIA Control Panel

Starting and Exiting the New NVIDIA Control Panel . . . . .	16
About the NVIDIA Control Panel Interface . . . . .	17
Navigating Through the Program . . . . .	22
Using the Menu Bar . . . . .	23

## 4. Accomplishing NVIDIA Control Panel Tasks

Starting the NVIDIA Control Panel . . . . .	28
Using the Display Category Page . . . . .	29
Using the Video & Television Category Page . . . . .	30
Using the 3D Settings Category Page . . . . .	31
Using the Mobile Category Page . . . . .	32
Using the Workstation Category Page . . . . .	33



# List of Figures



<b>Figure 3.1</b>	NVIDIA Control Panel Home Page . . . . .	17
<b>Figure 3.2</b>	Toolbar Options . . . . .	20
<b>Figure 3.3</b>	Navigation Options . . . . .	22



# List of Tables



<b>Table 2.1</b>	Supported NVIDIA Consumer Products . . . . .	6
<b>Table 2.2</b>	Supported NVIDIA Workstation Products . . . . .	8
<b>Table 2.3</b>	Hard Disk Space Requirements—English. . . . .	11
<b>Table 2.4</b>	Hard Disk Space Requirements—Non-English Languages. . . . .	11
<b>Table 2.5</b>	Hard Disk Space Requirements—Full International Package. . . . .	11
<b>Table 3.1</b>	Help Menu Panel. . . . .	19
<b>Table 3.2</b>	File Menu Commands . . . . .	23
<b>Table 3.3</b>	Edit Menu Commands . . . . .	23
<b>Table 3.4</b>	View Menu Commands . . . . .	24
<b>Table 3.5</b>	Help Menu Commands . . . . .	24
<b>Table 3.6</b>	Profiles Menu Commands. . . . .	25
<b>Table 3.7</b>	Display Menu Commands. . . . .	26



C H A P T E R

1

# INTRODUCTION

This *quick start* is addressed to users of the NVIDIA® Control Panel software. This guide focuses on getting you up and running with your NVIDIA software.

For technical details on the features and benefits of the NVIDIA Control Panel software and details about supported products, drivers, and other software, refer to the NVIDIA web page — [www.nvidia.com](http://www.nvidia.com).

This chapter discusses the following major topics:

- “About the NVIDIA Control Panel” on page 2
- “Getting Support and Information” on page 3

---

## About the NVIDIA Control Panel

Welcome to the NVIDIA Control Panel, designed for Microsoft® Windows® XP and Windows Vista. You can use NVIDIA Control Panel to control your NVIDIA hardware and access other NVIDIA software installed on your system.

**Note:** For Windows 2000, the NVIDIA ForceWare graphics driver uses the original display properties panel (NVIDIA classic control panel) for the user interface. See the document *ForceWare Graphics Driver User's Guide* for information about that interface.

## NVIDIA Driver Controls

In addition to setting up basic display configurations such as display resolution, refresh rate, and multiple display use, you can:

- Tune your 3D settings with real-time preview to maximize performance or image quality
- Customize how 3D applications work in your system
- Adjust your screen colors and contrast
- Set custom timings
- Control video image settings
- Change your HDTV format
- Control your notebook system power using PowerMizer
- Control special workstation features such as Frame Synchronization.

## Other NVIDIA Software Applications

If installed, other NVIDIA software that you can access from the NVIDIA Control Panel includes:

- NVIDIA nTune™
- NVIDIA MediaShield™
- NVIDIA Network Administration Management

See the respective user documentation for information about these applications and instructions on how to use them.



---

# Getting Support and Information

## Online Help

There are multiple ways to get online help:

- To browse the help file, select **NVIDIA Control Panel Help** from the **Help** menu or click **Contents** in the **Help** list in the Secondary Tasks Area.
- Press **F1** at any page.
- To access help by using a keyword, click **Index** in the **Help** list in the Secondary Tasks Area, or if the online help is already open click the **Index** button.
- To search the help, click **Search** in the **Help** list in the Secondary Tasks Area, or if the online help is already open click the **Search** button.

Also, when a setting is disabled (grayed out) and you place the cursor on the setting, the User Assistance area indicates the reason it is disabled.

## Technical Support

You can get technical support either from the NVIDIA website or by e-mail.

To send an e-mail:

- In the Secondary Tasks Area, click **Contact NVIDIA** in the **Help** list to open your e-mail program with the NVIDIA Technical Support address entered.

To access the NVIDIA Technical Support web page go the following web address:

<http://www.nvidia.com/page/support.html>

## System Information

You can get detailed information about your system and the NVIDIA Control Panel configuration as well as version and copyright information.

To view copyright and version information about the NVIDIA Control Panel:

- From the **Help** menu, select **About NVIDIA Control Panel**.

To view detailed system information:

- From the **Help** menu, select **System Information** and click on any of the tabs in the System Information dialog box.

C H A P T E R

2

# SYSTEM REQUIREMENTS AND DRIVER INSTALLATION

This chapter lists the system requirements for installing the NVIDIA ForceWare Release 90 graphics driver, and provides installation instructions. It contains the following major sections:

- “Hardware and Software Support” on page 6
- “Installing Your NVIDIA ForceWare Graphics Driver” on page 11

---

# Hardware and Software Support

This section lists the

- Supported Operating Systems
- Supported NVIDIA Products
- Supported Languages

## Supported Operating Systems

This Release 90 driver includes drivers designed for the following Microsoft® Windows® XP operating systems:

- Windows XP Media Center Edition 2005 Update Rollup 2
- Windows XP Media Center Edition 2005
- Windows XP Media Center Edition 2004
- Windows XP Professional
- Windows XP Home Edition
- Windows XP Professional x64 Edition
- Windows Server 2003 x64 Edition

## Supported NVIDIA Products

Table 2.1 and Table 2.2 list the NVIDIA products supported by the NVIDIA Control Panel software. The products are listed in the approximate order of their performance.

**Table 2.1** Supported NVIDIA Consumer Products

<b>Product</b>	<b>Windows XP 32-bit Windows 2000</b>	<b>Windows XP Professional x64</b>
GeForce 7950 GX2 (PCI-E)	X	X
GeForce 7950 GT (PCI-E)	X	X
GeForce 7900 GTX (PCI-E)	X	X
GeForce 7900 GTO (PCI-E)	X	X
GeForce 7900 GT (PCI-E)	X	X
GeForce 7900 GS (PCI-E)	X	X
GeForce 7800 GTX 512 (PCI-E)	X	X
GeForce 7800 GTX (PCI-E)	X	X

**Table 2.1** Supported NVIDIA Consumer Products (continued)

<b>Product</b>	<b>Windows XP 32-bit Windows 2000</b>	<b>Windows XP Professional x64</b>
GeForce 7800 GT (PCI-E)	X	X
GeForce 7800 GS (AGP and PCI-E)	X	X
GeForce 7600 GT (PCI-E)	X	X
GeForce 7600 GS (AGP and PCI-E)	X	X
GeForce 7500 LE (PCI-E)	X	X
GeForce 7300 GT (PCI-E)	X	X
GeForce 7300 SE (PCI-E)	X	X
GeForce 7300 LE (PCI-E)	X	X
GeForce 7300 GS (PCI-E)	X	X
GeForce 6800 (AGP and PCI-E)	X	X
GeForce 6800 XT (AGP and PCI-E)	X	X
GeForce 6800 XE (AGP and PCI-E)	X	X
GeForce 6800 Ultra (AGP and PCI-E)	X	X
GeForce 6800 LE (AGP and PCI-E)	X	X
GeForce 6800 GT (AGP and PCI-E)	X	X
GeForce 6800 GS (AGP and PCI-E)	X	X
GeForce 6700 XL (PCI-E)	X	X
GeForce 6610 XL (PCI-E)	X	X
GeForce 6600 VE (AGP and PCI-E)	X	X
GeForce 6600 LE (AGP and PCI-E)	X	X
GeForce 6600 GT (AGP and PCI-E)	X	X
GeForce 6600 (AGP and PCI-E)	X	X
GeForce 6500 (PCI-E)	X	X
GeForce 6200 LE (PCI-E)	X	X
GeForce 6200SE with TurboCache — PCI-E	X	X
GeForce 6200 with TurboCache — PCI-E	X	X
GeForce 6200 (AGP and PCI-E)	X	X
GeForce 6150 LE (PCI-E)	X	X
GeForce 6150 (PCI-E)	X	X
GeForce 6100 (PCI-E)	X	X
GeForce PCX 5900	X	X
GeForce PCX 5750	X	X
GeForce PCX 5300	X	X
GeForce FX 5950 Ultra	X	X
GeForce FX 5900ZT	X	X
GeForce FX 5900XT	X	X
GeForce FX 5900 Ultra	X	X
GeForce FX 5900	X	X
GeForce FX 5800 Ultra	X	X
GeForce FX 5800	X	X
GeForce FX 5700VE	X	X
GeForce FX 5700LE	X	X
GeForce FX 5700 Ultra	X	X

**Table 2.1** Supported NVIDIA Consumer Products (continued)

<b>Product</b>	<b>Windows XP 32-bit Windows 2000</b>	<b>Windows XP Professional x64</b>
GeForce FX 5700	X	X
GeForce FX 5600XT	X	X
GeForce FX 5600SE	X	X
GeForce FX 5600 Ultra	X	X
GeForce FX 5600	X	X
GeForce FX 5500	X	X
GeForce FX 5200LE	X	X
GeForce FX 5200 Ultra	X	X
GeForce FX 5200	X	X
GeForce FX 5100	X	X
GeForce4 Ti 4800 SE	X	
GeForce4 Ti 4800	X	
GeForce4 Ti 4600	X	
GeForce4 Ti 4400	X	
GeForce4 TI 4200 with AGP8X	X	
GeForce4 Ti 4200	X	
GeForce4 MX440SE with AGP8X	X	X
GeForce4 MX Integrated graphics	X	X
GeForce4 MX 460	X	X
GeForce4 MX 440-SE	X	X
GeForce4 MX 440 with AGP8X	X	X
GeForce4 MX 440	X	X
GeForce4 MX 420	X	X
GeForce4 MX 4000	X	X
GeForce3 Ti 500	X	
GeForce3 Ti 200	X	
GeForce3	X	
GeForce2 MX Integrated graphics	X	
GeForce2 MX 400	X	
GeForce2 MX 200	X	
GeForce2 MX 100	X	
GeForce2 MX	X	

**Table 2.2** Supported NVIDIA Workstation Products

<b>Product</b>	<b>Windows XP 32-bit Windows 2000</b>	<b>Windows XP Professional x64</b>
NVIDIA Quadro FX 5500	X	X
NVIDIA Quadro FX 4500 X2	X	X
NVIDIA Quadro FX 4500	X	X
NVIDIA Quadro FX 4400	X	X
NVIDIA Quadro FX 4000 SDI	X	X
NVIDIA Quadro FX 3500	X	X

**Table 2.2** Supported NVIDIA Workstation Products (continued)

<b>Product</b>	<b>Windows XP 32-bit Windows 2000</b>	<b>Windows XP Professional x64</b>
NVIDIA Quadro FX 3450	X	X
NVIDIA Quadro FX 3400	X	X
NVIDIA Quadro FX 3000	X	X
NVIDIA Quadro FX 2000	X	X
NVIDIA Quadro FX 1500	X	X
NVIDIA Quadro FX 1400	X	X
NVIDIA Quadro FX 1300	X	X
NVIDIA Quadro FX 1100	X	X
NVIDIA Quadro FX 1000	X	X
NVIDIA Quadro FX 700	X	X
NVIDIA Quadro FX 600	X	X
NVIDIA Quadro FX 560	X	X
NVIDIA Quadro FX 550	X	X
NVIDIA Quadro FX 540	X	X
NVIDIA Quadro FX 500	X	X
NVIDIA Quadro FX 350	X	X
NVIDIA Quadro FX 330	X	X
NVIDIA Quadro4 980 XGL	X	X
NVIDIA Quadro4 900 XGL	X	X
NVIDIA Quadro4 780 XGL	X	X
NVIDIA Quadro4 750 XGL	X	X
NVIDIA Quadro4 700 XGL	X	X
NVIDIA Quadro4 580 XGL	X	X
NVIDIA Quadro4 550 XGL	X	X
NVIDIA Quadro4 500 XGL	X	X
NVIDIA Quadro4 400 NVS	X	X
NVIDIA Quadro4 380 XGL	X	X
NVIDIA Quadro4 200 NVS	X	X
NVIDIA Quadro NVS 440	X	X
NVIDIA Quadro NVS 400	X	X
NVIDIA Quadro NVS 285 PCI-E	X	
NVIDIA Quadro NVS 280 PCI	X	X
NVIDIA Quadro NVS 280	X	X
NVIDIA Quadro NVS 200	X	X
NVIDIA Quadro NVS with AGP8X	X	X
NVIDIA Quadro NVS	X	X
NVIDIA Quadro2 MXR	X	X
NVIDIA Quadro DCC	X	X

## Supported Languages

The Release 90 NVIDIA ForceWare Graphics Driver supports the following languages in the main driver Control Panel:

English (USA)	German	Portuguese (Euro/Iberian)
English (UK)	Greek	Russian
Arabic	Hebrew	Slovak
Chinese (Simplified)	Hungarian	Slovenian
Chinese (Traditional)	Italian	Spanish
Czech	Japanese	Spanish (Latin America)
Danish	Korean	Swedish
Dutch	Norwegian	Thai
Finnish	Polish	Turkish
French	Portuguese (Brazil)	



---

# Installing Your NVIDIA ForceWare Graphics Driver

## Before You Begin

- If you do not have System Administrator access privileges, it is assumed that the appropriate person with System Administrator access in your organization will set up and install the NVIDIA graphics driver software on your computer.
- The installation process copies all necessary files for operation into the appropriate directories.
- The NVIDIA Control Panel system files are copied to your **Windows\System** directory.

## System Requirements

NVIDIA Control Panel requires the following minimum system configuration:

- A 600 megahertz (MHz) processor, such as an Intel Pentium III, Advanced Micro Devices (AMD) Athlon, or equivalent processor
- 128 megabytes (MB) of RAM
- The minimum hard disk space requirement for each operating system are listed in [Table 2.3](#), [Table 2.4](#), and [Table 2.5](#):

**Table 2.3** Hard Disk Space Requirements—English

Operating System	Minimum Hard Disk Space
Windows XP (all editions)	41.1 MB
Windows 2000	41.1 MB

**Table 2.4** Hard Disk Space Requirements—Non-English Languages

Operating System	Minimum Hard Disk Space
Windows XP (all editions)	26.66 MB
Windows 2000	26.66 MB

**Table 2.5** Hard Disk Space Requirements—Full International Package

Operating System	Minimum Hard Disk Space
Windows XP (all editions)	67.76 MB
Windows 2000	67.76 MB

To optimize the performance of the NVIDIA Control Panel, the following system requirements are recommended:

- A 1.5 gigahertz (GHz) processor, such as an Intel Pentium 4, an AMD Athlon XP 1500+, or equivalent processor
- 256 megabytes (MB) of RAM
- An Internet connection

## System Requirement for NVIDIA SLI Technology (Advanced Users)

If you are an advanced user of graphics and hardware and want to use NVIDIA SLI technology, your system must have the following key hardware components:

- **An SLI-ready motherboard** that supports a PCI Express chipset and dual x16 connectors for two NVIDIA PCI Express graphics cards
- Two NVIDIA-based SLI-ready graphics cards
  - Both cards must be identical in terms of GPU, memory configuration, and clock speeds
  - NVIDIA recommends that both cards be from the same vendor
- One NVIDIA SLI Connector

## Uninstalling the NVIDIA Display Driver

**Note:** It is highly recommended that you follow the steps in this section to completely uninstall the NVIDIA Display Driver software before updating to a new version of the software.

To uninstall the nView software, follow these steps:

- 1 From the Windows taskbar, click **Start > Settings > Control Panel** to open the Control Panel window.
- 2 Double-click the **Add/Remove Programs** item.
- 3 Click the **NVIDIA Display Driver** item from the list.
- 4 Click **Change/Remove**.
- 5 Click **Yes** to continue.

A prompt appears asking whether you want to delete all of the saved nView profiles.

- If you click **Yes**, all of the nView software and all of your saved profiles will be deleted.
- If you click **No**, the nView software is removed, but the profile files are saved in the `Windows\nView` directory on your hard disk.

Your system now restarts.

## Installing the NVIDIA ForceWare Graphics Drivers

- 1** Follow the instructions on the NVIDIA .com web site driver download page to locate the appropriate driver to download, based on your hardware and operating system.
- 2** Click the driver download link.
- 3** The license agreement dialog box appears.
- 4** Click **Accept** if you accept the terms of the agreement, then either open the file or save the file to your PC and open it later.  
Opening the EXE file launches the NVIDIA InstallShield Wizard.
- 5** Follow the instructions in the NVIDIA InstallShield Wizard to complete the installation.



# UNDERSTANDING THE NVIDIA CONTROL PANEL

This chapter describes the NVIDIA Control Panel in the following sections:

- “Starting and Exiting the New NVIDIA Control Panel” on page 16
- “About the NVIDIA Control Panel Interface” on page 17
- “Navigating Through the Program” on page 22
- “Using the Menu Bar” on page 23

---

# Starting and Exiting the New NVIDIA Control Panel

## Starting the NVIDIA Control Panel

You can start NVIDIA Control Panel in several ways:

- Right-click the Windows desktop, then click **NVIDIA Control Panel** from the context menu, or
- From the Windows **Start** menu, select **Control Panel**, then in the **Control Panel** window, double-click on the NVIDIA Control Panel icon.



## Exiting the NVIDIA Control Panel

To exit the program:

- From the **File** menu, select **Exit**, or
- Click the **Close** box in the upper right corner of the program window.

## Accessing the Classic NVIDIA Control Panel

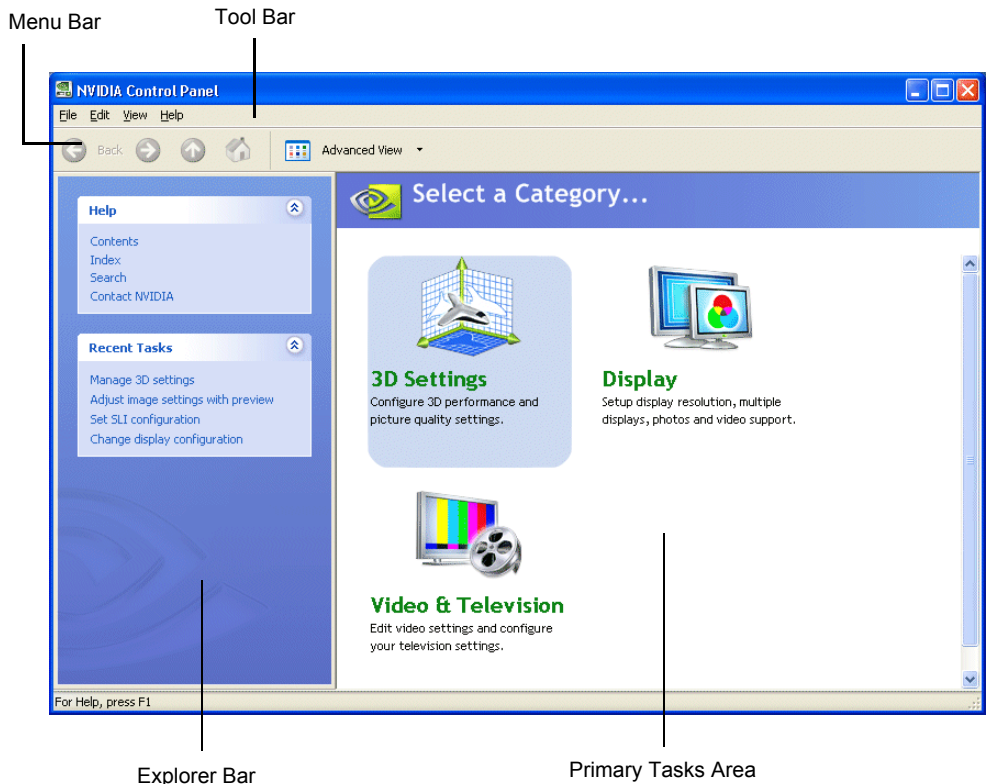
You can also switch to the NVIDIA display properties page (classic NVIDIA control panel) as follows:

- 1 From the menu bar, click **View**.
- 2 Select **Use Classic NVIDIA Control Panel**.

## About the NVIDIA Control Panel Interface

The NVIDIA Control Panel provides an easy-to-use interface for managing your system. The NVIDIA Control Panel user interface consists of these main areas, as shown in Figure 3.1:

- Primary Tasks Area
- Explorer Bar
- Menu bar
- Toolbar .



**Figure 3.1** NVIDIA Control Panel Home Page

When you start the program, the NVIDIA Control Panel home page is displayed. The home page is the starting point and provides access to application task pages which you can use for managing your system.

## Using the Primary Tasks Area

The *Primary Tasks Area*, in the right pane, displays the main navigation pages such as the Select a Category page, application task lists, and application task pages. This area of the screen is where you will focus most of your attention as you use the NVIDIA Control Panel to accomplish your goals.

### About NVIDIA Control Panel Categories

When you first install the NVIDIA Control Panel, it includes the Display and Video & Television applications—called *categories* in the NVIDIA Control Panel home page—which allow you to manage your display, video, and television settings. You can install additional applications that enable you to perform tasks such as optimizing your graphics display for games or adjusting your system performance.

Icons for each the applications installed on your system appear on the home page in the Primary Tasks Area. The specific icons displayed depend on the applications you have installed on your system. For a list of categories you can install, see the NVIDIA website at [www.nvidia.com](http://www.nvidia.com).

### Selecting Categories and Performing Tasks

All of the tasks you can accomplish using the NVIDIA Control Panel are accessed through the application categories. To open an application category, click on the category icon in the Primary Tasks Area of the home page.

If you click on the category icon, a page is displayed listing the tasks available for that category. For example, if you click on the Display icon, the Display tasks are listed in the Primary Tasks Area.



## Using the Explorer Bar

The *Explorer Bar*, in the left pane, lists tasks that don't directly accomplish the primary task but are related to the primary task. Explorer Bar tasks might bring up dialog boxes, change the visual presentation of the screen's contents, or navigate to a different screen.

The Explorer Bar contains the following panes:

- Help
- Recent Tasks
- Related Tasks

Each of these panes are described in the following sections.

### Help Pane

The Help pane commands allow you to access online help, open your web browser, or contact NVIDIA Technical Support.

**Table 3.1** Help Menu Panel

Help Command	Description
Contents	Click to open the online help with the Contents tab open. Use the Contents tab to browse the online help
Index	Click to open the online help with the Index tab open. Use the Index tab to search using a keyword.
Search	Click to open the online help with the Search tab open. Use the Search tab to search for one more words that you specify.
Contact NVIDIA	Click to open your email program and send an email message to NVIDIA Technical Support.

### Recent Tasks Pane

Using the Recent Tasks pane, you can quickly navigate to tasks that you have recently performed. Tasks are displayed with the most recent tasks at the top of the list.

### Related Tasks Pane

Using the Related Tasks pane displays tasks related to the task currently open in the Primary Tasks Area.

## Using the Tool Bar

The *Toolbar* (optional) provides quick access to common tasks such as switching between Standard and Advanced views. Navigating between the home page and other task pages, and so on.

To show or hide the toolbar:

- From the **View** menu, select **Toolbar**.

When the toolbar is displayed, a check mark appears next to the **Toolbar > Standard** command on the menu. .

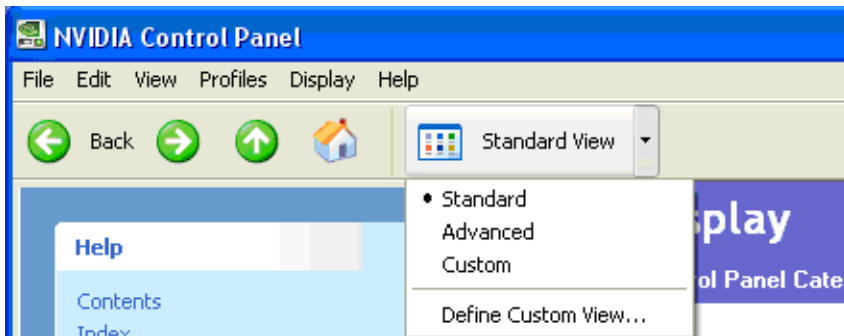


Figure 3.2 Toolbar Options

## Working with Views

The currently selected view determines what options are available. There are three available views:

- Standard
- Advanced
- Custom

Most commands are available for both Standard and Advanced views. However, some options are available only if the Advanced view is selected before opening the application category page. Also, task page options may differ depending on the selected view. If the command you're looking for is not displayed, return to the home page, select a different view, and return to the task page.

To change the view:

- From the **View** menu, select **Standard**, **Advanced**, or **Custom**.

**Note:** For the Custom command to be available, you must define a custom view as described in the following section.

## Defining Custom Views

You can customize NVIDIA Control Panel to display only the application category pages you want to see and use.

To specify which the pages to display:

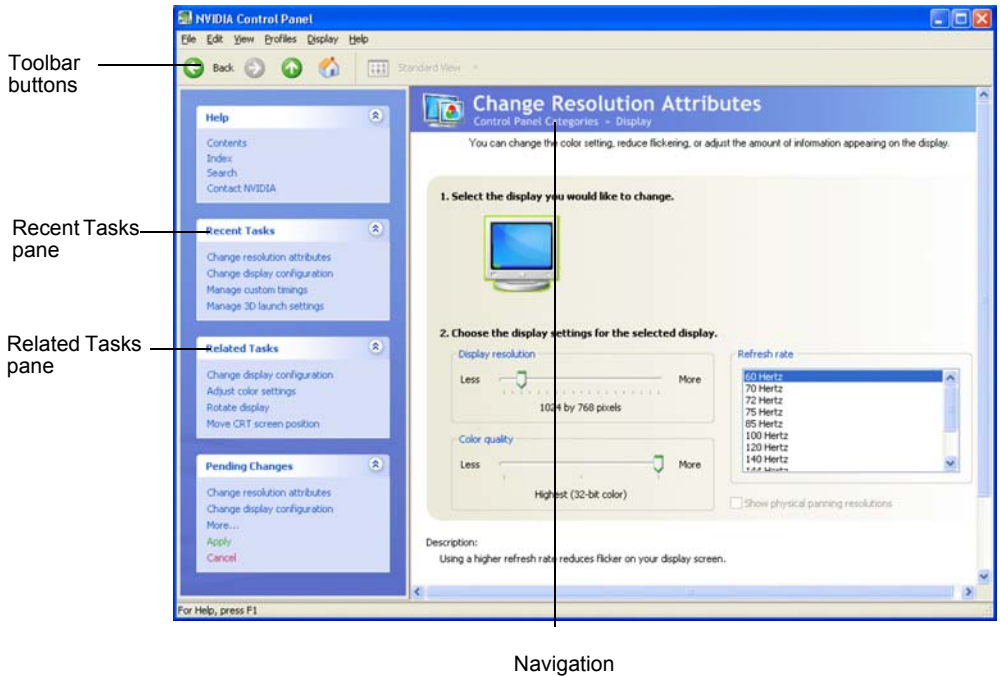
- 1** Select **View > Define Custom View...** or for quicker access, use the toolbar if you have it enabled.
- 2** On the **Create Custom View** page, for each application category that appears, select (check) the check boxes for the pages that you want to view and click **OK**.
- 3** To leave the Custom View mode, select either **Standard** or **Advanced** from the **View** menu or for quicker access, use the toolbar if you have it enabled.
- 4** To switch back to your custom view, select **Custom**.

# Navigating Through the Program

You can navigate through the NVIDIA Control Panel program using:

- The navigation links under the page title of the Primary Tasks Area
- The Forward and Back buttons in the toolbar
- Navigation text buttons in the Navigation list of the explorer bar
- Recent tasks in the Recent Tasks list of the explorer bar
- Related tasks in the Related Tasks of the explorer bar

Each of these are shown in [Figure 3.3](#)



**Figure 3.3** Navigation Options

---

## Using the Menu Bar

The *Menu bar* contains standard Windows menus and menus specific to the NVIDIA Control Panel, such as the View and Profiles menus.

Menus that are available on the menu bar may vary, depending on the NVIDIA Control Panel category (such as, Display, Mobile, 3D Settings, or other category) you are using.

## File Menu

Commands related to printing, applying changes, and exiting the program are available on the **File** menu.

**Table 3.2** File Menu Commands

<b>File Menu Command</b>	<b>Description</b>
Print...	Print the current task page.
Print Preview....	Preview the page before sending it to the printer.
Print Setup...	Open the Print Setup dialog box to adjust your printer properties.
Exit	Close the NVIDIA Control Panel program.

## Edit Menu

Commands related to cutting, copying, pasting, and selecting items are available on the **Edit** menu.

**Table 3.3** Edit Menu Commands

<b>Edit Menu Command</b>	<b>Description</b>
Cut	Cut the selected text and place in the clipboard.
Copy	Copy the selected text and place in the clipboard.
Paste	Paste the text currently in the clipboard to the location of the Windows cursor.
Select All	Select all items on the current page.

## View Menu

Commands related to viewing the various pages in the NVIDIA Control Panel application modules are available on the **View** menu.

**Table 3.4** View Menu Commands

<b>View Menu Command</b>	<b>Description</b>
Toolbar	Lets you add a standard toolbar to navigate between the Home Page and other NVIDIA Control Panel task pages, quickly access common tasks such as switching between <b>Standard</b> , <b>Advanced</b> , and <b>Custom</b> views, as well as quickly create custom views using the <b>Define Custom View</b> command.
Status Bar	Select to toggle between showing or hiding a status bar at the bottom of any NVIDIA Control Panel window. When the <b>Status Bar</b> command appears with a check mark on the <b>View</b> menu, this means that the status bar is enabled and viewable.
Explorer Bar	Select this command to toggle between showing or hiding one of more of the following groups of Help command or other tasks in the Secondary Tasks Area of your NVIDIA Control Panel. When the <b>Explorer Bar</b> commands appear with a check mark, this means that those commands are viewable in the secondary task area of your NVIDIA Control Panel.
Standard	Select to view and access the majority of commonly used and simpler tasks in the NVIDIA Control Panel applications. When the <b>Standard</b> command appears with a check mark, this means that the Standard view is currently active on your NVIDIA Control Panel active.
Advanced	Select to view and access certain complex tasks in the NVIDIA Control Panel applications. These tasks often require some advanced experience using graphics hardware and software (drivers). When the <b>Advanced</b> command appears with a check mark, this means that the Advanced view is currently active on your NVIDIA Control Panel.
Custom	Select to choose a custom view. This command appears on the <b>View</b> menu <i>only</i> if you have used the <b>Define Custom Views</b> command to customize showing/hiding specific screens.
Define Custom View	To see only those application pages you want to see and use based on the application modules (Display, 3D Settings, etc.) that are installed on your system, select <b>Define Custom Views</b> from the View menu.
Use Classic NVIDIA Control Panel	Select to switch to the classic NVIDIA control panel.

## Help Menu

Commands related to accessing help, system information, and copyright and version information are available on the **Help** menu.

**Table 3.5** Help Menu Commands

<b>Help Menu Command</b>	<b>Description</b>
NVIDIA Control Panel Help	Access the NVIDIA Control Panel online help.

**Table 3.5** Help Menu Commands

System Information	View detailed information about your system and the NVIDIA Control Panel configuration.
About NVIDIA Control Panel	View NVIDIA Control Panel version and copyright information.

## Profiles Menu

This menu item appears only when certain category pages are open.

Commands related to saving, loading, and deleting profiles are available on the **Profiles** menu.

**Table 3.6** Profiles Menu Commands

<b>Profiles Menu Command</b>	<b>Description</b>
Load...	Load a profile of display settings you have previously saved. Click to open the Load Desktop Profile dialog box and select a .nvp file.
Save...	Save the current configuration to a profile file. Click to open the Save Desktop Profile and enter a name and path for the .nvp file.
Delete...	Delete a profile. Click to open the Delete Desktop Profile dialog box and locate a profile to delete.

## Display Menu

This menu item appears only when the Display category page is open.

Commands related to your displays are available on the **Display** menu.

**Table 3.7** Display Menu Commands

<b>Display Menu Command</b>	<b>Description</b>
Show Desktop Context Menus	Select to show the desktop context menus.
Identify Displays	Select to identify the displays configured with your system.



# ACCOMPLISHING NVIDIA CONTROL PANEL TASKS

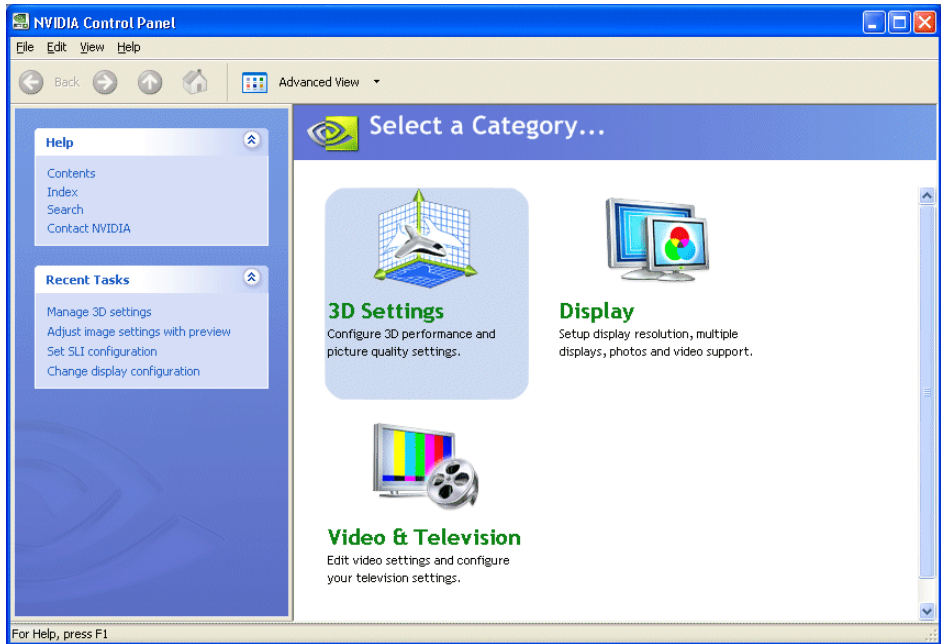
This chapter provides instructions on how to use the NVIDIA Control Panel to accomplish common tasks. It contains the following sections:

- Starting the NVIDIA Control Panel
- Using the Display Category Page
- Using the Video & Television Category Page
- Using the 3D Settings Category Page
- Using the Mobile Category Page
- Using the Workstation Category Page

# Starting the NVIDIA Control Panel

**1** Launch the NVIDIA Control Panel:

- Right-click the Windows desktop, then click **NVIDIA Control Panel** from the context menu, or
- From the Windows **Start** menu, select **Control Panel**, then in the **Control Panel** window, double-click the NVIDIA Control Panel icon. .



The categories that appear in the Select a Category page depend on which NVIDIA software is installed on your system. For example, the Mobile category is not available on desktop systems.

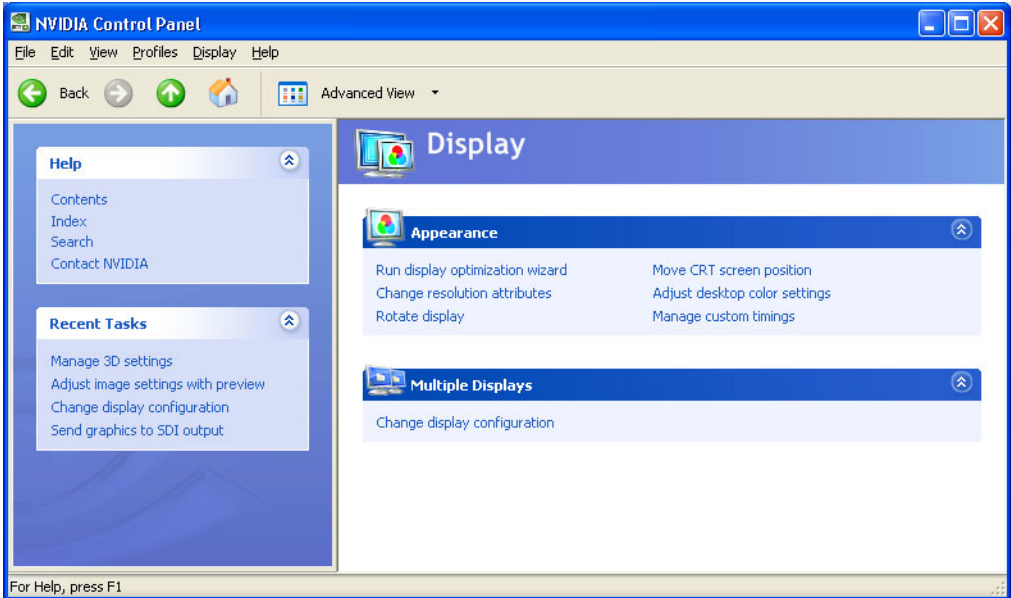
**2** Click one of the categories to open a specific task page.

Each category page lists different tasks that you can accomplish, and each task page provides instructions on how to accomplish what you want. Move the cursor over listed options to see a description and typical usage scenario for that option.

Detailed instructions for each task are also available through the online help.

## Using the Display Category Page

- 1 Click Display from the NVIDIA Control Panel Select a Category page.

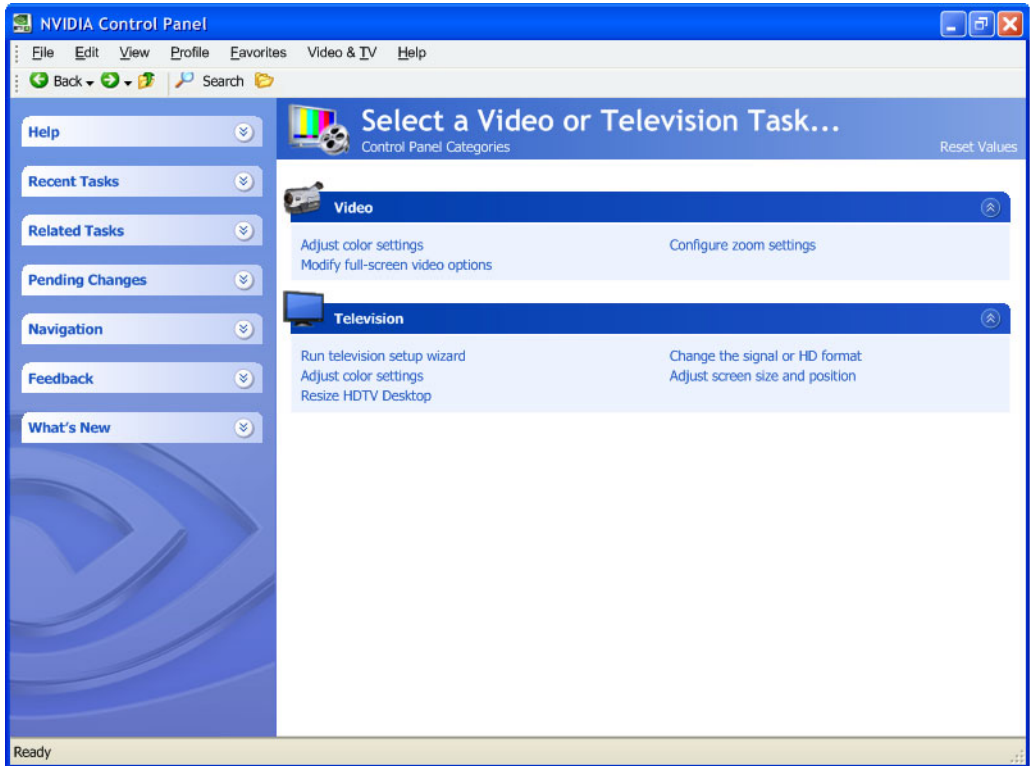


The actual tasks available on your system depend on your system hardware, such as the number and type of displays connected.

- 2 Use the Display page to:
  - Run the wizard to optimize your display configuration
  - Change the display resolution
  - Change the scaling on your flat panel display
  - Adjust color settings
  - Rotate the display
  - Adjust custom timings (available under Advanced View)
  - Configure multiple displays, including Spanning or Clone modes.

## Using the Video & Television Category Page

- 1 Click Video & Television from the NVIDIA Control Panel Select a Category page.



The actual tasks available on your system depend on your system hardware, such as whether or not you have a TV connected.

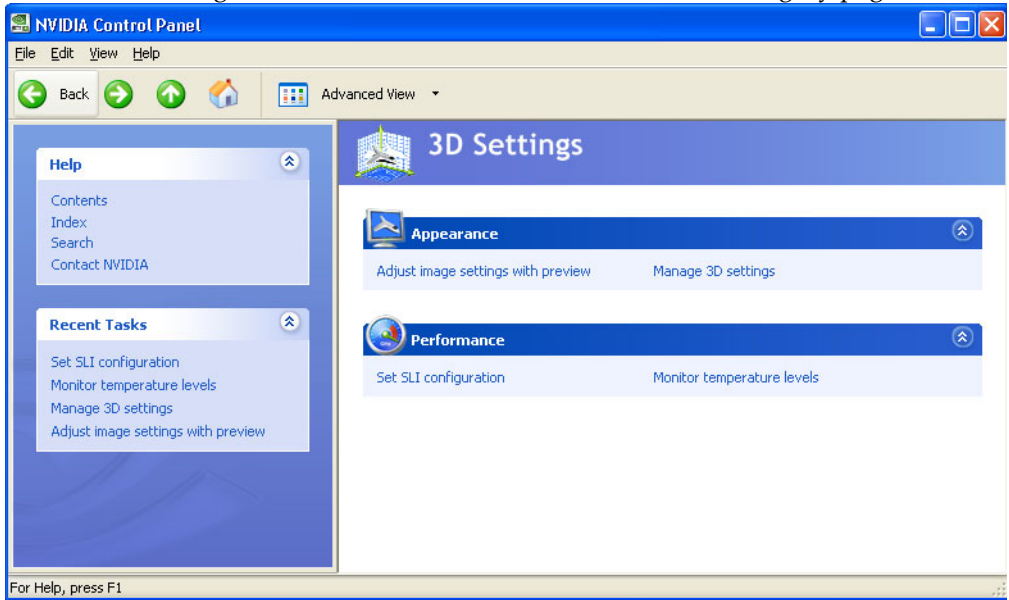
- 2 Use the Video & Television page to:
  - Adjust your television picture quality and video color settings for the best possible viewing in its environment
  - Enable full screen video mirroring so that you can view full screen video content on one display while the other display has the smaller video window with visible controls
  - Change the position and size of the desktop/video to best fit your television or HDTV (high definition television) screen

- Change the signal format to use for your standard television or HDTV as well as change country-specific signal or the HDTV format

---

## Using the 3D Settings Category Page

1 Click 3D Settings from the NVIDIA Control Panel Select a Category page.



The actual tasks available on your system depend on your system hardware, such as whether or not you have an SLI-ready system.

2 Use the The 3D Settings page to:

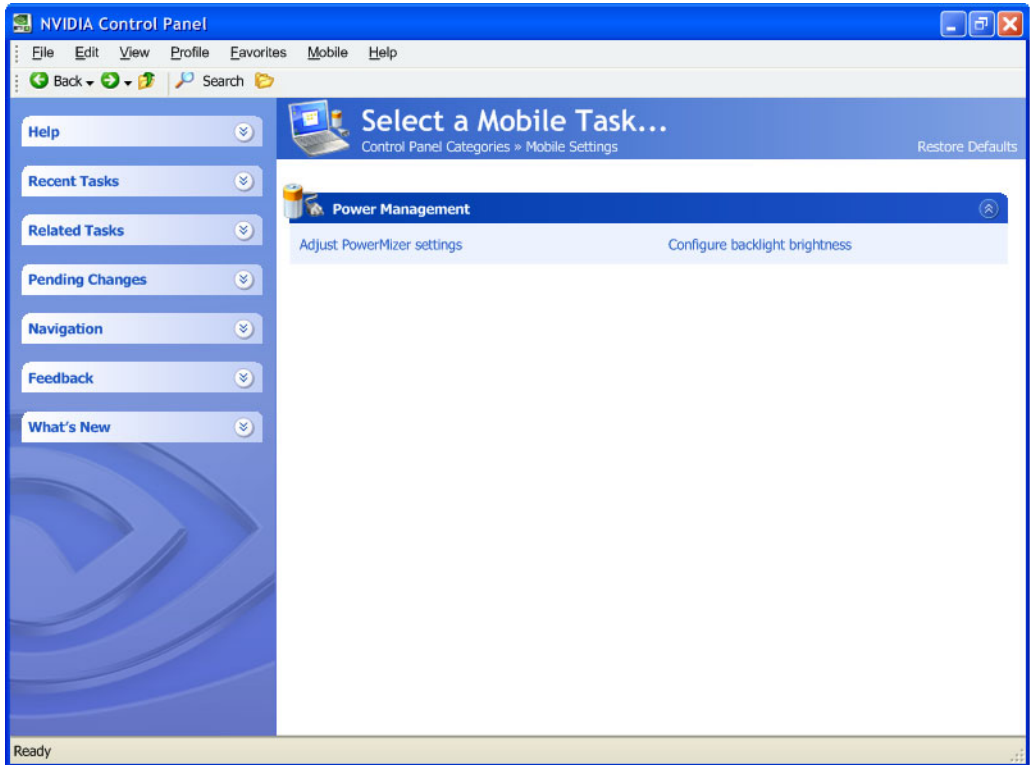
- Change the image and rendering settings of your 3D applications and games that utilize Direct3D and OpenGL technology
- Assign specific 3D settings to a game so that these settings automatically load when a game is launched (available under Advanced view)
- Monitor the temperature of the GPU
- Set up your SLI configuration
- Set up your multi-GPU configuration
- Adjust overclocking settings

---

## Using the Mobile Category Page

The Mobile category is available if the NVIDIA software is installed on a notebook computer.

- 1 Click Mobile from the NVIDIA Control Panel Select a Category page.



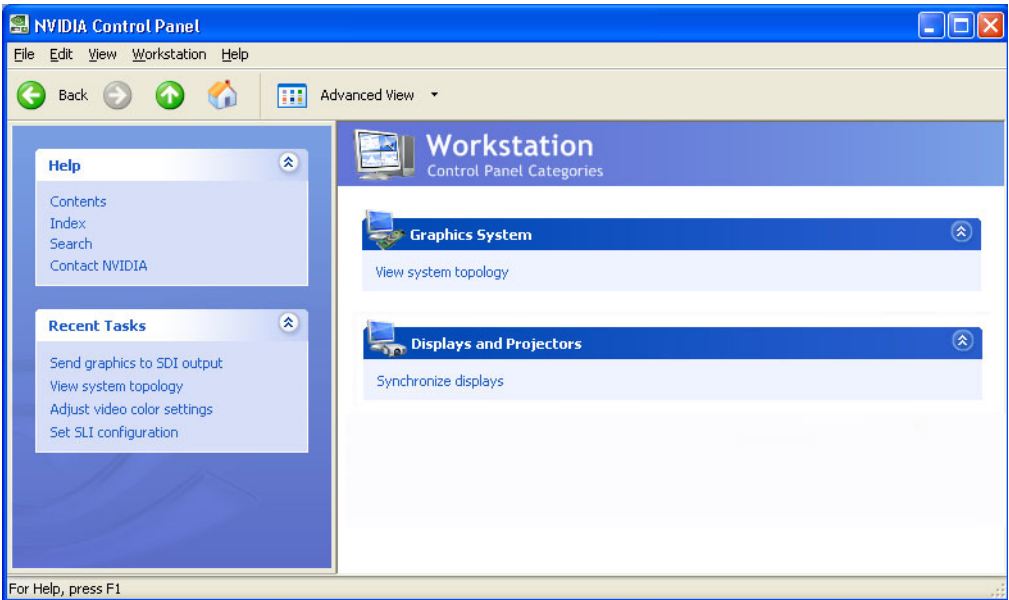
The actual tasks available depend on which features are included with your notebook system.

- 2 Use the Mobile page to extend your notebook computer's battery life using :
  - NVIDIA PowerMizer technology
  - NVIDIA SmartDimmer technology

## Using the Workstation Category Page

The Workstation category is available if you have an NVIDIA Quadro FX graphics card installed.

- 1 Click Workstation from the NVIDIA Control Panel Select a Category page.



The actual tasks available depend on which NVIDIA Quadro FX product you have installed.

- 2 Use the Workstation page to:
  - Synchronize your displays using frame sync or genlock technology
  - View a graphical representation of the displays and graphics cards installed on your system.